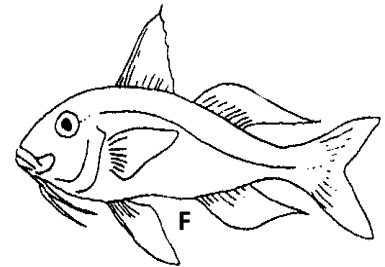
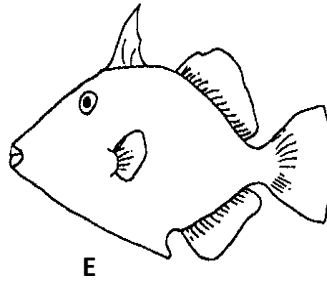
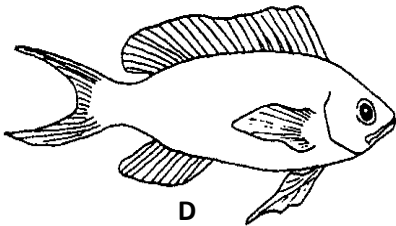
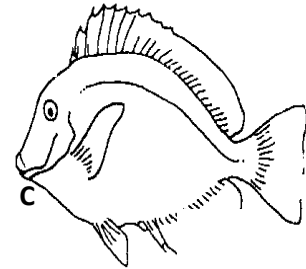
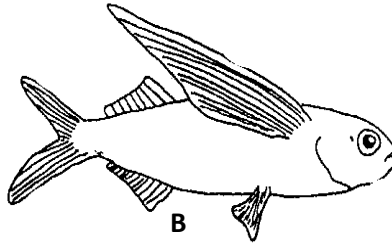
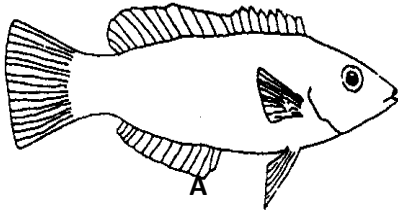


## DICHOTOMOUS KEY -5

Complete the following dichotomous key set to identify the SIX fishes shown below:



- |   |   |                      |
|---|---|----------------------|
| 1 | a . Tail fin forked                               | Go to 2              |
|   | b . Tail fin entire                               | Go to 4              |
| 2 | a . Pectoral fin half the body length             | Flying fish.....     |
|   | b . Pectoral fins relatively short                | Go to 3              |
| 3 | a . Barbels present                               | Goat fish.....       |
|   | b . Barbels absent                                | Surgeon Fish.....    |
| 4 | a . Pelvic fins absent                            | Trigger fish.....    |
|   | b . Pelvic fins present                           | Go to 5              |
| 5 | a . Pectoral fins clearly in front of pelvic fins | Cardinal fish.....   |
|   | b . Pectoral fins nearly level with pelvic fins   | Butterfly perch..... |