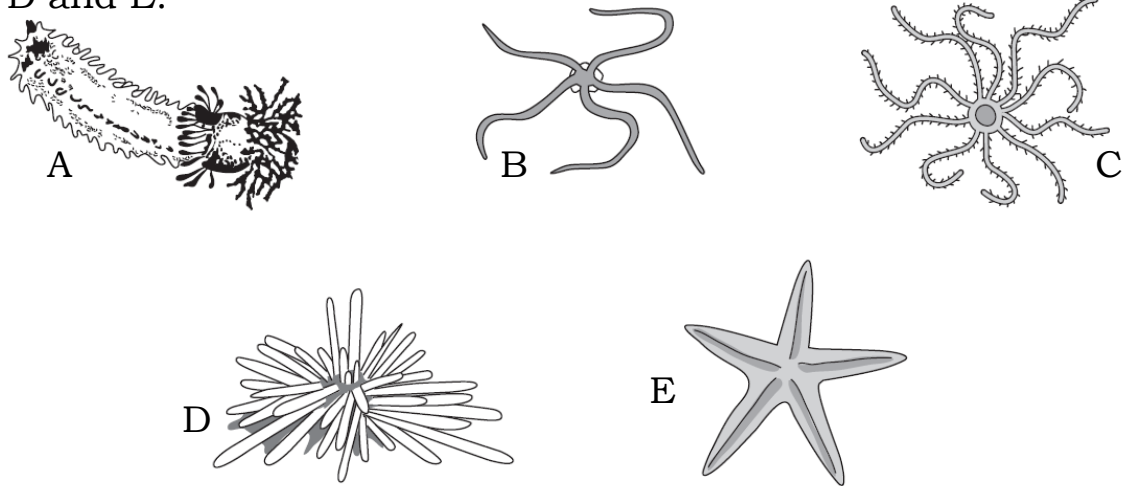


DICHOTOMOUS KEY -7

Fig. shows five examples of the phylum Echinodermata, labelled A, B, C, D and E.



Use the key below to identify the animals A to E in Fig. . Write the letter for each animal in the box next to its common name.

1. Animal has five visible arms go to 2
 Animal does not have five visible arms go to 3
2. Animal has a clear central disc
 Animal does not have a clear central disc
3. Animal has more than five visible arms
 Animal has no visible arms go to 4
4. Animal has a soft body
 Animal has long visible spines